

Porta John® References & Products

Porta John® is a Registered Trademark

www.portajohn.com

www.toilets.com

www.portaloo.com



15-01-01-0000 12-01-01 10-0-0-00 0-01-00

Atlanta Comm. for the Olympic Games
Attn: Mr. J. M. Moore
Date: 6/21/96

LETTER OF TRANSMITTAL #0046

PROJECT TITLE: Temporary Portable Facilities/Ramp
To: Mr. J. M. Moore
From: Mr. J. M. Moore
Date: 6/21/96

4776-1-000-0000

WE ARE SERVING YOU: ☐ Admitted ☐ Separate entry ☐ No following event
☐ Day entrance ☐ Plaza ☐ Plaza ☐ Security ☐ Specifications
☐ Case of toilet ☐ Change order ☐ Other

Page: 1

Serial	NO.	Witness	Description	Status
1	11/1/96		EXHIBITED AGREEMENT between Atlanta Committee for the Olympic Games (ACOGG) and Porta-John of America, for Portable Toilets at all Venues	

Please process and return to us later than:
REMARKS: This original, executed document should be returned to your firm.

DATE: 6/21/96

Copies to: Porta-John Corporation, Portable Toilet Commission, CONSTRUCTION Office
Check No.

Signature: [Signature]

Atlanta 1996

June 21, 1996

Don White
Porta-John of America, Inc.
50033 Pryor Rd.
Olney, MD 20845

Subject: Letter of Transmittal
Olympic Portable Toilet Contract

Dear Mr. White:

Please find enclosed four (4) copies of the Contract for Portable Toilets for the 1996 Summer Olympic Games. Please return all four (4) signed originals to:

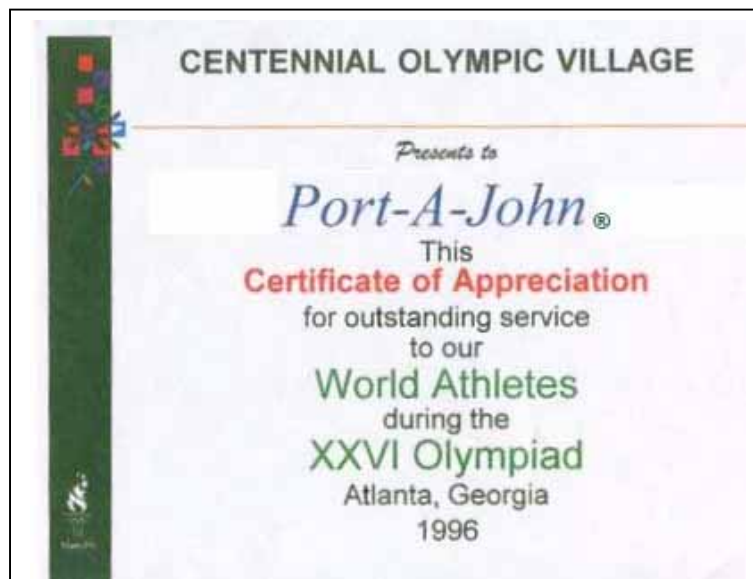
Mr. William J. Moore
Managing Director, Construction Department
The Atlanta Committee for the Olympic Games
220 Williams Street, Suite 2000
Atlanta, Georgia 30303

In addition, this letter authorizes Porta-John of America, Inc. to proceed with the Scope of Work for each venue and event included within the Contract.

Sincerely,
[Signature]
William J. Moore
Senior Vice President
Construction

cc: Bill Johnson
John Hancock
Dick Larson

During the 1996 Olympic Summer Games in Atlanta, Georgia our Porta John® Patented Folding Portable Toilets were used exclusively.



Direct Contact: Info@toilets.com



Web Server Statistics for **www.toilets.com**

Program started at Mon-21-Jan-2008 07:15 local time.

Analysed requests from Wed-09-Jan-2008 18:04 to Mon-21-Jan-2008 10:14 (11.7 days).

Total successful requests: 209,072 (134,997)

Average successful requests per day: 17,909 (19,285)

Total successful requests for pages: 16,585 (10,790)

Average successful requests for pages per day: 1,421 (1,541)

Total failed requests: 345,305 (223,206)

Total redirected requests: 134 (91)

Number of distinct files requested: 632 (607)

Number of distinct hosts served: 7,225 (4,841)

Number of new hosts served in last 7 days: 4,156

Corrupt logfile lines: 1,244

Total data transferred: 4,282 Mbytes (2,739 Mbytes)

Average data transferred per day: 375,584 kbytes (400,640 kbytes)

(Figures in parentheses refer to the last 7 days).

References

We were the exclusive sanitation manufacturer and service company for the 1996 Summer Olympic Games in Atlanta, Georgia; Woodstock '99 in Rome, New York; Air Shows; the 2003 Phish Concert in Lewiston, Maine; the 2004 Phish Concert in Newport, Vermont; 15 years as the Sanitation Contractor for the New Orleans Mardi Gras; most natural disasters from 1973 to the present; plus several hundred thousand smaller events over the last 30 years.

<http://toilets.com/news/comfortstationNews/WDIV.html>

Porta John® - Toilets.com

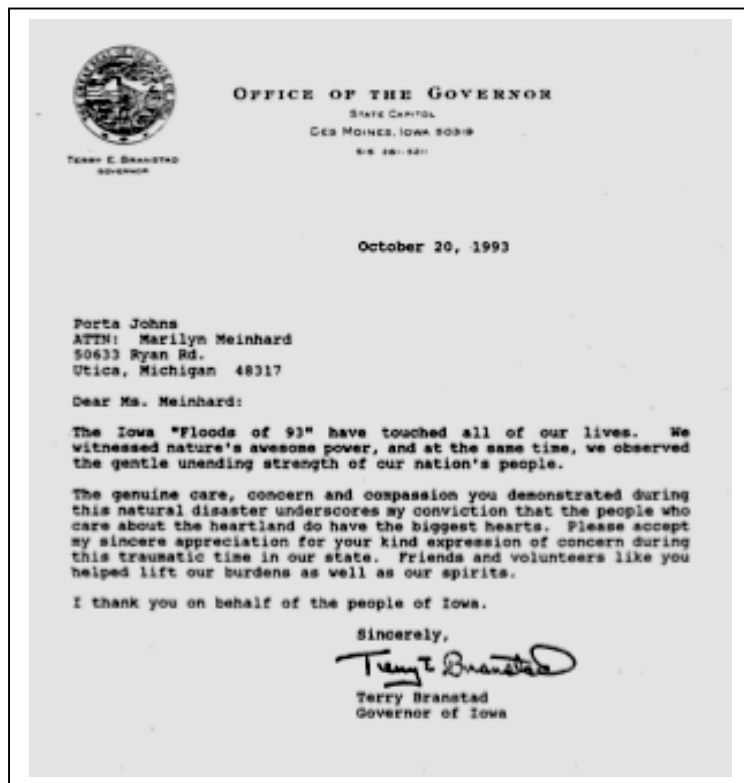
Phone: 800-521-6310 Fax: 586-731-0760

E-mail: info@toilets.com Web Site www.toilets.com

International Phone: 001-586-739-4611

Please Feel Free to Contact Us

Porta John® is a Registered Trademark



Customer E-Mail Samples:

"I am having my wedding on the 4th of July 2008. The reception will be held at my parents house in xxxxxxxx, xx. It will be an outdoor reception and I am looking into renting a portable toilet as my parents have a septic tank. I understand the need for a portable toilet however I am worried about how unsightly the traditional portable toilet is. While reviewing your website I saw model number ths7516 which was a men and women's bathroom side by side. Would this be something that would be a possibility? If so how much would it cost to rent for the day? What other details would be involved? Please advise. Thank you."

----- Forwarded Message

From: Patrick Barrett <XXXXXXXXXXXX>

Date: Thu, 17 Jan 2008 21:24:46 +0100

To: <info@toilets.com>

Subject: Toilets for Yacht Club Port de Plaisance

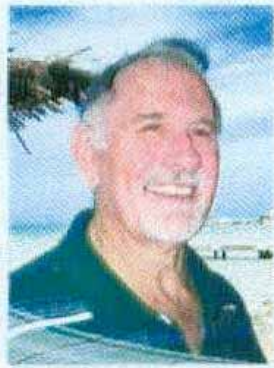
Well just to up-date you, the toilets reached St. Maarten about December 15. We spotted them on December 23rd. We eventually had them in place by early January, hooked them up and can now say that they are in working order. However, since they look so good, we are using them as show pieces(not for use by the general public)! But seriously they certainly live up to the advertisements and we will promote your product to anyone.

Thank you very much for your efforts to get them to us.

Sincerely

Patrick

ABOUT US



Patrick Barrett,
Director of Operations

Winter Rendezvous for Megayachts

With nearly half of the marina's alongside and Mediterranean-style berths available for megayachts, the Yacht Club Port de Plaisance has become a popular rendezvous for professionally-crewed yachts that migrate to Sint Maarten seeking a strategic winter base within the Lesser Antilles, extending from the Virgins to Venezuela.

Direct Air Links to North America and Europe

Sint Maarten/St. Martin enjoy direct air links to Europe, North America, and the Caribbean via the Princess Juliana International Airport, the island's only runway capable of accommodating wide-bodied passenger jets, as well as private aircraft and cargo planes. Complete with heliport and facilities for private jets, this cosmopolitan Caribbean hub (destination code SXM) serves as a convenient FBO for passengers joining vessels throughout the region.

Gateway to Leeward Islands Cruising Grounds

Regarded by experienced yachtsmen as the finest anchorage in the Caribbean, the 12-square-mile Simpson Bay Lagoon -- that spans the Dutch-French border and is accessed via either the Simpson Bay Bridge (Dutch Side) or the Sandy Ground Bridge (French Side) -- is a convenient operational base for Leeward Island-hopping

charteryachts with itineraries that include port calls on Anguilla, St. Barth  lemy, Saba, St. Eustatius, St. Kitts, Nevis, and Antigua.

Caribbean's Finest Freeport

A major tourism destination with a reputation as the 'Duty Free Shopping Mecca' of the Caribbean, this 37-square-mile 'Friendly Island' charms visitors with its spectacular beaches, tropical climate, and alluring mix of European and Caribbean cultures.

Its status as a completely duty-free and tax-free port, however, is the feature that most excites visiting yachtsmen, making it an attractive destination for megayacht provisioning, repairs and refits. In many instances, marine parts and equipment may be purchased locally for less than they would cost in the U.S., Canada, or Europe. Goods not immediately available can easily be ordered and shipped.

Sint Maarten's excellent air and sea freight links provide daily access to gourmet provisions, marine equipment, domestic as well as foreign parts and products, without the need for paying taxes or import duties -- or experiencing the delays usually associated with their collection.

Region's Premiere Yacht Service Center

Combined with its reputation for superior customer service and full range of modern marina facilities, the Yacht Club Port de Plaisance's popularity among captains is attributed, in part, to its proximity to a superb array of high quality technical services for yacht maintenance, repair, and refit that have established Sint Maarten as one of the Caribbean region's premiere service centers for professionally-crewed yachts, challenged only by major stateside yachting capitals like Ft. Lauderdale and Miami. There's an ample supply of marine tradesmen, including technicians, electricians, refrigeration-air conditioning specialists, as well as skilled day workers.

City of Pawnee City
445 6th Street
PO Box 206
Pawnee City, Nebraska 68420

August 6, 2008

To Whom it May Concern,

The City of Pawnee City highly recommends Porta-John Industries, Inc and the high degree of excellence that they put into the building and construction of their lavatory units.

During the past several years, Pawnee City has made many nice improvements to its campground. Numerous events occur here during the year to include birthday parties, weddings, class reunions and family picnics. The City has used services of a porta-potty provider to supply a restroom facility at the site. Availability of these types of services was limited in our rural community as providers are not willing to travel this far to service a porta-potty. Because of this, City officials decided to look for a flushable toilet system for the City's fishing, camping/picnic area. City staff researched online possibilities and found Porta-John Industries, Inc at www.toilets.com.

The City purchased a Freitag 4848-57 single stall ADA Compliant lavatory from Porta-John Industries. The lavatory arrived as a complete portable unit, ready to be placed on site. The City has been extremely pleased with the entire ordering process, delivery and quality of the company and the product they sell. City officials and the community have left positive comments about the new restroom facility. It has been a wonderful addition to our community.

With highest regards,

City of Pawnee City, Nebraska

Accomplishments

The City of Pawnee City wants the Southeast District Health Department to know just how much we appreciated the \$5000 Mini Grant that the department awarded to the City. The flushable toilet system that the City has installed out at The Peewendess Campground has already made the area a much healthier, cleaner place for those using our campground. And once again, thank you for helping us fund this project! The Southeast District Health Department is definitely serving this community well!

City of Pawnee City



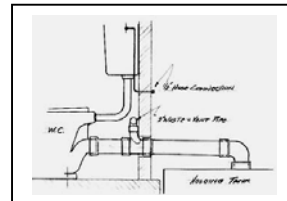
Partial Display of Porta John® Branded Standard Portable Toilet Products

"Out-Standing in The Field"®



Drop Tank Toilets (Patents & Trademarks Issued and Pending)

"When a Portable Toilet is not an Option"™



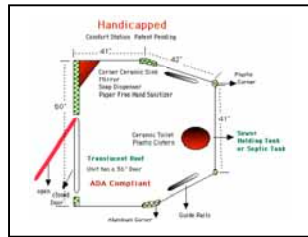
How They Work



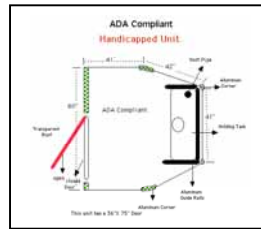
7,000,000 Page Views Annually



Single Comfort Station (Patents & Trademarks Issued and Pending)



Comfort Station ADA



Drop Tank ADA



Single ADA Lavatory (Patents & Trademarks Issued and Pending)



Hand Wash Station

www.handwashstation.com



www.sanitizers.com
www.handsanitizers.com



www.waterlesstoilets.com



www.toteajon.com



www.showerlavatory.com



www.portableshowers.com



Some Pumping Systems Manufactured by Porta John®



www.portablebuildings.com

www.womenslavatory.com

Patented Multiple and Single Stall Ground Level Fresh Water Flush & Hand Wash Stalls

Be a Part of Our World Recognized Brand

Over 30 Years' Experience in the Sanitation Industry

Proven Proprietary Product Line

Premier Internet Marketing Company

Industry Leading Green Footprint and Safety Features

Industry's Most Hygienic Sanitation Product Line

Contact Us and You, Too, Can Be:

"Out-Standing in The Field"®



www.menslavatory.com



www.showerlavatory.com



Patented Products
Eco-Friendly
Hygienically Safer Than a Portable
Toilet
"When a Portable is Not an Option"



Freitaq 4848 Top View

Front View

www.handicappedtoilet.com

Technical drawing of the interior of a shower stall. The drawing shows a rectangular shower pan with a diameter of 1525 mm. The overall width of the stall is 1525 mm, with a 60 mm gap on the left and a 42 mm gap on the right. The overall height is 1420 mm, with a 48 mm gap at the top and a 56 mm gap at the bottom. The shower pan is shown with a dashed line indicating its circular shape. The drawing also shows the location of the shower pan relative to the walls and the door.

Standard Safety Features

A close-up photograph of a door handle and lock mechanism. The handle is a polished brass or gold-colored lever. The lock is a cylindrical deadbolt, also in a matching polished finish. The door itself is a light-colored wood or laminate. The image is framed by a thin black border.



info@toilets.com



9

Mobility



Fig. 1 - Picking Up By Tine Ports



Fig. 2 - Tine Ports (Steel Frame)

Dimensions Bldg Shown: 12' 3" x 7' x 7' 5" High
Standard Dimensions: 10' 3" x 7' x 7' 5"

Lavatory Buildings Can Be Relocated for Disasters



Fig. 3 - Preparing To Ship



Fig. 4 - Loaded on Trailer



Fig. 5 - Easy Ground Level Connection

Toilets.com, Inc.

Phone: 1-800-521-6310 Fax: 1-800-437-9220

E-mail: info@toilets.com Web Site

www.toilets.com

www.portajohn.com Comfort Stations in action:

Comfort Stations on You Tube

NCAA 2008 Basketball www.toilets.com Freitag Model 4848 & 7777

<http://www.youtube.com/watch?v=VaSHEI-BOCU>

Hockey 2008 Playoffs www.toilets.com Freitag Model 4848

<http://www.youtube.com/watch?v=hsE-bivgLf0>

Food Show Toilet www.toilets.com Freitag Model 4848

<http://www.youtube.com/watch?v=2KsZNWD21EA>

Rooftop Toilet www.toilets.com Model 520

<http://www.youtube.com/watch?v=xijY4S4Vkuk>

Final Four – 2009 Basketball Playoffs www.toilets.com Models 600 & 520 and 7777

<http://www.youtube.com/watch?v=H1VTnAbDFmg>

Contact Us:

Porta John® - toilets.com, Inc.

Toll-Free Phone: 800-521-6310 Fax: 586-731-0670

International Phone: 586-739-4611

Web Page: www.toilets.com E-Mail: info@toilets.com